

About Neomedic

Founded more than 20 years ago, Neomedic is a worldwide leading Company in providing solutions for female prolapse. We take pride in offering our patients a minimally invasive solution created to treat female pelvic organ prolapse.

Consult with your doctor about ANCHORSURE prolapse system or visit our website www.neomedic.com for more information.



ANCHORSURE

Less Invasive Prolapse System

Smile again.
Regain your confidence.

 neomedic
international

The Continence Company

www.neomedic.com

Federal Law (U.S.) restricts this device to sale by or on the order of a physician. The safety and effectiveness of the Surelift Prolapse System in transvaginal surgical procedures to treat pelvic organ prolapse have not been evaluated in a prospective, randomized clinical study.

The Surgical procedure presents some risks. Potential adverse reactions may occur. Patient may have pain, irritation, infection, mesh erosion, mesh extrusion, dyspareunia, recurrent prolapse, foreign body reaction, etc. Be sure you discuss all treatment options with your surgeon.

ANCHORSURE

Less Invasive Prolapse System



Smile again.
Regain your confidence.

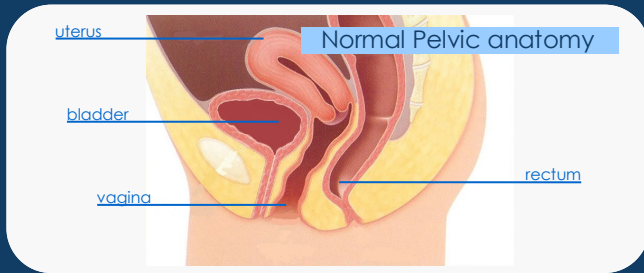
 neomedic
international

The Continence Company

About Pelvic Organ Prolapse...

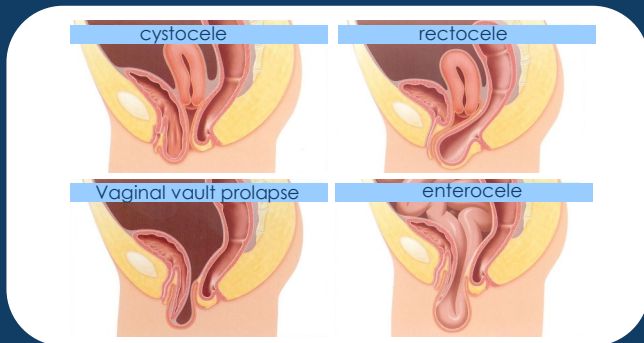
It is estimated that thirty to fifty percent of women may experience Pelvic Organ Prolapse (POP) in their lifetime with two percent developing symptoms.

This condition is commonly caused by childbirth, age, hysterectomy, obesity, or previous surgery. Several studies have shown it often occurs in Northern European, Asian, Hispanic, and African-American women.



What causes POP?

POP occurs when the tissues that hold the pelvic organs in place become weakened or stretched. When POP happens, the organs bulge (prolapse) into the vagina and sometimes prolapse past the vaginal opening. More than one pelvic organ can prolapse at the same time.



Organs that can be involved in POP include the bladder, uterus, rectum, top of the vagina (after hysterectomy), and the bowel.

How can POP be treated?

There are several options to treat POP. One of the most effective treatment options is a surgical procedure in which the doctor places a small anchor without mesh through a small vaginal incision. This will restore your organs to their natural position. In most cases, it is an outpatient procedure generally performed under general anesthesia. Consult with your doctor to determine your best treatment option.

Smile again...

ANCHORSURE

Less Invasive Prolapse System

Surelift Anchorsure is a suture fixation system for repair of pelvic floor tissues. The device is indicated for attaching sutures to pelvic floor ligaments to treat vaginal prolapse.

Why choose minimally-invasive surgery?

- * less intra-operative trauma
- * fewer post-op complications and pain
- * faster recovery than traditional approaches

ANCHORSURE is an effective, minimally invasive solution.

You have every right to live without:

- * Feeling of fullness or pressure in your pelvic and vagina
- * An increased discomfort when straining, coughing, sneezing or lifting objects
- * Feeling unable to empty your bladder after urinating
- * Repeated urinary infections
- * Pain or urinary leaking during sexual intercourse
- * Complete inability to have sexual intercourse



All surgical procedures present some risks. Complications associated with the procedure include: nerve damage or injury to blood vessels, temporary bleeding, difficulty urinating, pain, discomfort, scarring, pain with intercourse, bladder and bowel injury, erosion of surrounding tissues. Alternatively, Surelift Anchorsure system may be used in conjunction with a prolapse mesh. In this case, there is also a risk of mesh erosion (exposure of the material into surrounding tissue). Mesh exposure can be associated with pain during intercourse for patient and/or partner.

All risk factors must be given a consideration. Only after a complete physical examination and patient consultation, the multi-disciplinary team of physicians, together with the patient consent, can determine if you are a candidate for prolapse surgery.

The occurrence of adverse reactions may require revisions and/or realization of subsequent treatments which may include additional surgery.

If you have been diagnosed with pelvic organ prolapse, the **ANCHORSURE System** may be the right treatment for you. As with any surgery of this kind, this procedure should not be performed on children, pregnant women, women planning on becoming pregnant in the future, or patients with pre-existing conditions that pose an unacceptable surgical risk as determined by your physician, and include comorbidities that may compromise tissue healing.